

HELLO ZEBRA MUSSELS. GOODBYE TEXAS LAKES.

Zebra mussels are a destructive invasive species that can spread across Texas by hitching a ride on boats and trailers.



Boats are the primary carrier of zebra mussels.

Zebra mussels can easily attach to a boat's hard surfaces and boaters travel frequently between water basins. Surveyed boaters planned to visit more than 50 Texas lakes in the next 30 days.

FOUND IN

8 Texas
Lakes



1.5 inches

Zebra mussels' size ranges from microscopic (larvae) up to 1.5 inches long (adults).

HUNDREDS of microscopic zebra mussel larvae, invisible to the naked eye, could be present in **ONE** liter of water.

IN ONLY **6** YEARS:

Texoma	Lavon
Ray Roberts	Waco
Lewisville	Belton
Bridgeport	Dean Gilbert

1,000,000

Zebra mussel eggs spawned every year by **ONE** female.

RECREATIONAL IMPACT



Attached zebra mussels can decrease boat fuel efficiency, damage a boat's finish and clog water pumps.



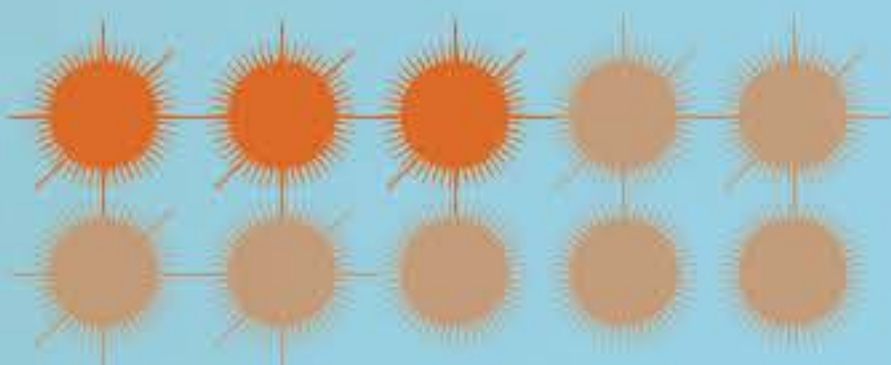
452 per square inch

Zebra mussels can reach densities of 452 per square inch, covering beaches with sharp shells.

DAMAGE TO THE ECOSYSTEM

Algal bloom

Zebra mussels caused an algal bloom that led to a "do not drink" order for half a million Lake Erie residents.



70% reduction

Zooplankton have been reduced by 70% in other infested lakes, impacting filter feeding fish, important prey for bass and other sportfish.

FINANCIAL IMPACT

Cost to taxpayers

Zebra mussels can completely clog an entire municipal pipeline up to 12 inches wide.



Decreased property value

Up to 19% in some areas infested with aquatic invasive species.



Stop the spread!

- 1 Clean**
- 2 Drain**
- 3 Dry**